

# Whitepaper



Overview for  
IT Professionals

Author  
InLoox GmbH

Date  
23/05/2025

# What is InLoox?

## In one sentence

InLoox is a powerful project management software that helps teams and organizations to plan, manage and successfully implement their projects more efficiently.

## Integrated in Microsoft 365

The platform integrates seamlessly into Microsoft 365, which makes it especially attractive for teams that already work intensively with the Microsoft product suite.

## Supplement basic tools sensibly

Enhance Teams, Outlook, and more with advanced tools for capacity planning, prioritization, and management - beyond isolated solutions

“

**InLoox provides additional value in any Microsoft landscape**





# Full support for cloud and on-premise

## You decide where & how

---

Based on Microsoft Azure, we offer a ready-to-use platform with hosting in certified data centers in Germany with flexible runtimes (starting from 1 month).

Likewise, InLoox can also be operated completely locally and isolated on your corporate IT. You can find out more about the system requirements online under [www.inloox.com/system-requirements/](http://www.inloox.com/system-requirements/).

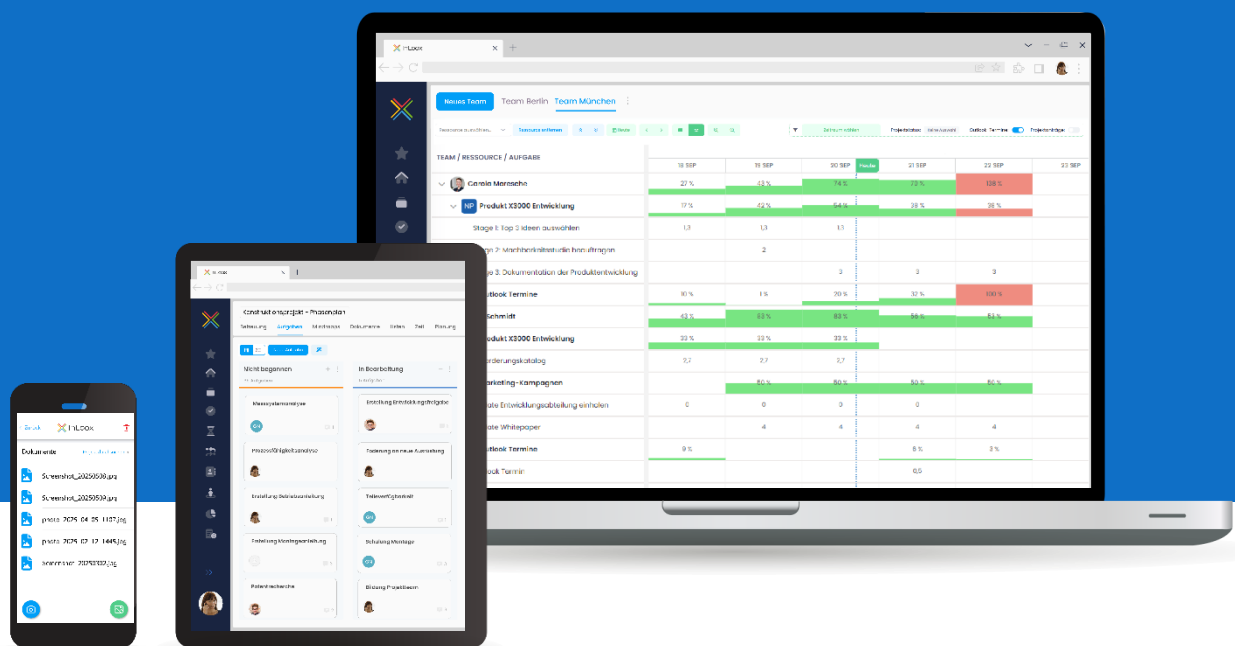
# Core features

## Enterprise project management

InLoox enables holistic and forward-looking multi-project management and is based on the existing Microsoft infrastructure.

## Resource management

InLoox provides real-time data about line and project workloads for all teams - including Microsoft Exchange Online calendar assignments.



InLoox is accepted and practiced because it is at home wherever users are already familiar with it - for example, in the inbox, calendar or Microsoft Teams. This facilitates the introduction in the company and significantly improves both acceptance and data quality.



# Advantages



Low setup and maintenance effort

No installation is required for cloud operation. On premise servers can be launched on an existing Microsoft Internet Information Server.

---



Single sign-on available as standard

For user authentication, Microsoft Active Directory or Microsoft Entra ID (formerly Azure Active Directory) can be used - a convenience plus for users and administrators alike.

---



Technical support directly from the manufacturer

The support of InLoox is always there to help you ensure the smooth operation of the software.

## System requirements

InLoox requires a browser.

You can find out more about the system requirements in on-premise operation under [www.inloox.com/system-requirements/](http://www.inloox.com/system-requirements/).



# Whitepaper

Overview for  
IT Professionals

## Contact



Walter-Gropius-Strasse 17  
80807 Munich, Germany



Phone +49-89-3589988-0  
Fax +49-89-3589988-99



Mail [info@inloox.com](mailto:info@inloox.com)



Web [www.inloox.com](http://www.inloox.com)